

UBio-X Pro Lite

Prime Face & Fingerprint Recognition Terminal



Matching Speed
35,000 Face Templates
in 1sec



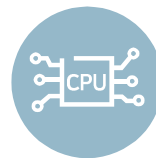
Illuminance of up to
30,000Lux



Face Recognition

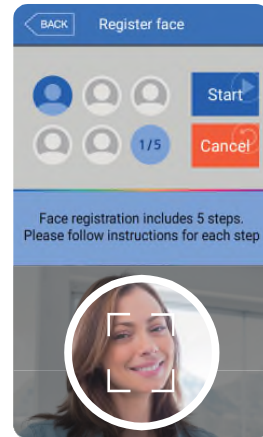
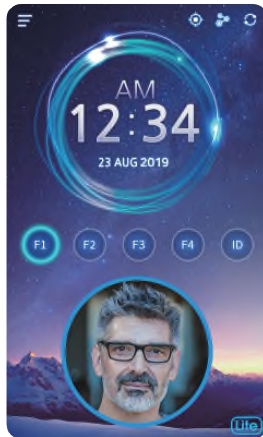


large Memory



High performance
CPU

☉ Main UI



☉ Features



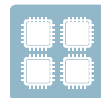
High Ambient light conditions
Illuminance up to 30,000 Lux



2MP CMOS Camera w/IR LED
Stronger filtering of brighter
background conditions



High Speed Face and
Fingerprint Matching



1.0 GHz Quad Core CPU



Patented Fake Fingerprint
Detection



Android 4.0 based intuitive GUI
with 5" Touch LCD

☉ Specification

OS	Android 4.0	RF/ Smartcard option	13.56MHz Smart Card Reader, 125KHz-EM, HID Prox/I/Class (Optional) RF Card Reader
Fingerprint Sensor Type	Optical Sensor	Capacity	Max User : 500,000 Fingerprint 1: 200,000 Templates < 1sec Face 1: 35,000 Templates < 1sec Event Logs: 10,000,000 Photo Logs: 20,000
CPU	1.0GHz Quad Core (Cortex-A9)	Certificates	KC, CE, FCC
Memory	eMMC 16GByte DDR3 2GB RAM (512MB x 4)	Interface	RS232/RS485, Wiegand In/Out, Wifi (Optional), SD Card Scket
Display	5" color TFT LCD with Touch	Dimension (W x H x D)	149.3 x 202.2 x 129.2 mm (W x H x D)

