

NTL

LARGE HOUSING FOR THERMAL CAMERAS



IP66

IP67



NTL + NXWBL

DESCRIPTION

This housing for thermal camera provides the vision also in complete darkness, fog, rain, smoke or for long-range distances.

It is possible to use this housing for a wide range of high-security surveillance systems, such as: monitoring and rescue in the event of a fire, public safety, along with airport, industrial and environmental surveillance.

The germanium window has non-scratch treated, Hard Carbon Coating (DLC) on the outside and antireflection inside; the spectral range is from 7.5 μ m to 14 μ m.

The big dimensions of this camera housing make it suitable to contain the largest zoom lenses of the market.

The NTL housing can be installed on NXPTH Pan & Tilt head, to obtain a complete positioning system.

MAIN FEATURES

Made of AISI 316L electropolished stainless steel

Germanium window

IP66/IP67

Available with different window dimensions: \varnothing 55mm (2.1in), \varnothing 70mm (2.8in) and \varnothing 110mm (4.3in)

Available accessories: heater, camera power supply

TECHNICAL DATA

GENERAL

Housing manufactured in polished stainless steel (austenitic stainless alloy steel resistant to corrosion and heat):

- AISI 316L
- UNI 6900-71: X 2 Cr Ni Mo 17 12 2
- DIN 17006: X 2 Cr Ni Mo 17 13 2
- N° werkstoff: 1.4404
- AFNOR: Z2 CND 17-12
- BSI: 316S11

The screws utilised are in austenitic alloy stainless steel, corrosion and heat resistant according to the following standards:

- ISO: 7380
- AISI: 316
- ISO quality: A4

MECHANICAL

Cable glands: 4xPG13.5 (nickel-plated brass for external connections)

Flange thickness: 12mm (0.47in) (front), 9mm (0.35in) (back)

External body polishing

Gaskets: High sealing O-ring

Internal usable area (WxH): 112x112mm (4.4x4.4in)

Internal usable length: 562mm (22.1in)

Internal usable length (with heater): 477mm (18.7in)

Unit weight: 13kg (28.7lb)

HOUSING'S WINDOW

Germanium window (thick: 2mm (0.08in))

- NTL1K1000
Usable diameter: 55mm (2.1in)
- NTL1K1300
Usable diameter: 70mm (2.8in)
- External treatment: antiscratch (Hard Carbon Coating - DLC), antireflection
- Internal treatment: antireflection
- Spectral range: from 7.5µm up to 14µm
- Medium transmittance (from 7.5µm up to 11.5µm): 90%
- Medium transmittance (from 11.5µm up to 14µm): 77%

Germanium window (thick: 3mm (0.1in))

- NTL1K1500
Usable diameter: 110mm (4.3in)
- External treatment: antiscratch (Hard Carbon Coating - DLC), antireflection
- Internal treatment: antireflection
- Spectral range: from 7.5µm up to 14µm
- Medium transmittance (from 7.5µm up to 11.5µm): 90.6%
- Medium transmittance (from 11.5µm up to 14µm): 76.4%

ELECTRICAL

Heater (Ton 15°C±3°C (59°F±5°F), Toff 22°C±3°C (72°F±5°F))

- Power supply/Consumption: IN 12Vdc/24Vac, 20W max
- Power supply/Consumption: IN 120/230Vac, 40W max

ENVIRONMENT

For indoors and outdoors installation

Operating temperature (with heater): from -20°C (-4°F) up to +60°C (140°F)

Relative humidity: from 5% up to 95%

CERTIFICATIONS

Electrical safety (CE): EN60065

Electromagnetic compatibility (CE): EN50130-4, EN61000-6-3

IP protection degree: EN60529 (IP66/IP67)

EAC certification

ACCESSORIES

NXCTPG13SS Kit of 2xPG 13.5 stainless steel cable glands IP68 for stainless steel housings.

ONXLH1 Heater 120/230Vac

ONXLH2 Heater 12Vdc/24Vac

ONXPS1B Wide range power supply for camera IN 100-240Vac - OUT 12Vdc, 1.25A

ONXPS2B Camera power supply IN 230Vac - OUT 24Vac, 400mA

BRACKETS AND ADAPTORS

NXWBL AISI 316L stainless steel wall bracket with joint

NXWBS1 AISI 316L stainless steel wall bracket with joint

NXCOL AISI 316L stainless steel pole adapter module

NXCW AISI 316L stainless steel corner adapter module

NXWTU Wall adaptor module in stainless steel AISI 316L

RELATED PRODUCTS

NXPHT Stainless steel P&T motor

PACKAGE

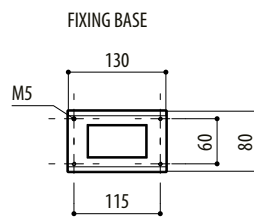
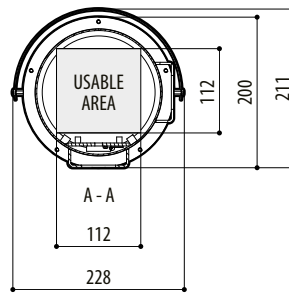
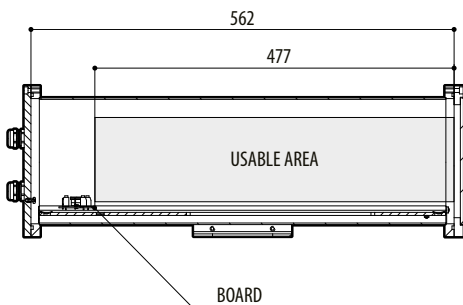
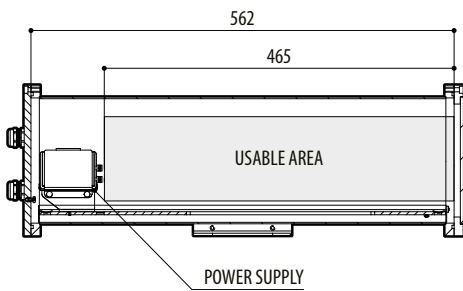
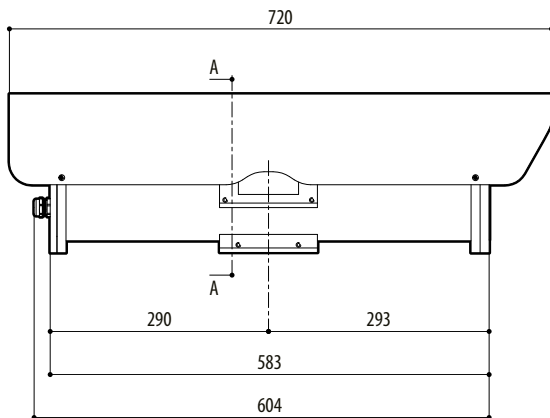
Model Number	Weight	Dimensions (WxHxL)	Master carton
NTL1K1000	15kg (33.5lb)	29.5x35x75cm (11.6x13.8x29.5in)	-

AVAILABLE MODELS

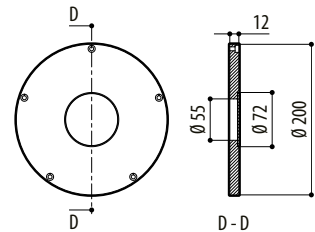
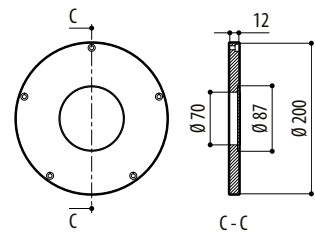
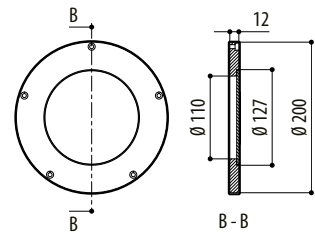
Model Number	Housing sunshield	Power supply 230Vac	Ø germanium window
NTL1K1000	√	√	55mm (2.1in)
NTL1K1300	√	√	70mm (2.8in)
NTL1K1500	√	√	110mm (4.3in)

TECHNICAL DRAWINGS

The indicated measurements are expressed in millimetres.



FRONT FLANGE



NTL