

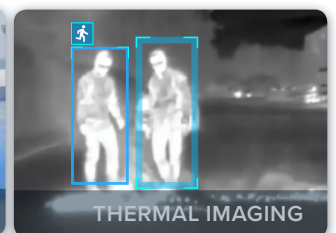


H4 Thermal Camera

See More Detail in Complete Darkness

The Avigilon H4 Thermal camera is embedded with our self-learning video analytics to provide long-range perimeter protection and leverages thermal technology to operate under challenging conditions while minimizing false alarms.

It is designed to detect the presence and movement of people and vehicles in areas with poor visibility, including partly camouflaged scenes, low lighting and even absolute darkness, without the need for additional light sources.



SELF-LEARNING VIDEO ANALYTICS

Detect and classify objects regardless of lighting/darkness or extreme environments such as weather, dust, debris, smoke or foliage

Features



MULTIPLE LENS OPTIONS

Choose from three athermalized lens variants to optimize on-site coverage requirements



WEATHER & IMPACT RATED

IP66 weather rating and IK10* impact rating for vandal resistance



ONVIF COMPLIANT

Native ONVIF® Profile S and Profile T compliance allows easy integration with existing ONVIF infrastructures

avigilon.com/h4-thermal | asksales@avigilon.com

*For VGA resolution models, IK10 rating only applies to the camera enclosure. Images of product features have been simulated for illustrative purposes.

© 2019, Avigilon Corporation. All rights reserved. AVIGILON and the AVIGILON logo are trademarks of Avigilon Corporation. ONVIF is a trademark of Onvif, Inc.