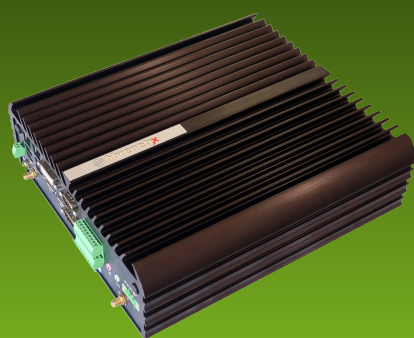




Data sheet



# MOBIX-II Series – Superior Fanless Embedded System



MOBIX-II

Robust and powerful Video Server for Mobile and Hazardous Environments, the Mobix-II can be equipped with 4x Hard Disk Drives and supports natively RAID 5

## RAID 5 Video Server for Mobile and Hazardous Environments

Fibrenetix MOBIX-II is a fully-ruggedized video server, ideal for hazardous environments where traditional computers cannot be deployed. MOBIX-II video server is designed to operate at high temperatures, in desert, vehicle and factory environments.

Up to four internal 2.5" SSDs of 7.6 Terabytes each of storage capacity (Raw Storage of 30.4TB)

## Main Applications

- Public Safety, Transportation
- ATM
- Oil and Gas
- Construction
- Water Industry



- MOBIX-II is designed for both mobile and stationary platforms, as a cornerstone for surveillance applications in hazardous environments.
- MOBIX-II is 100% noise free and can go completely unnoticed, even in the quietest office environment.
- The mobile video server design makes MOBIX ideal for surveillance in trains, buses and armoured vehicles.
- With built-in support for a mobile SIM card, MOBIX-II can transmit any recorded video streams to a central control room, using a regular 3G4G or 5G network.
- MOBIX-II comes with 4, 8, 12 & 16 POE LAN connections in RJ45 and M12, offering an easy and cost effective integration to IP cameras.
- MOBIX-II is an open platform device, running Windows 10 or LINUX.

Public Transportation, Law Enforcement and Public Safety, Cash-in-Transit, Rental Cars and Driving Institutes, Heavy Equipment, Hazardous Goods...



## Technical Specifications

| Product Category                    | MOBIX-II Series  |
|-------------------------------------|--|
| Processor                           | Intel® Core®i7/i5/i3 or Pentium® Processor   |
| Core Logic                          | Intel® Q170 Express Chipset  |
| Memory                              | 2x 260-Pin DDR4 1866/2133MHz SODIMM<br>Max. up to 32GB   |
| OS Storage (internal 2.5")          | 2x Internal 2.5" SATA HDD Bay<br>2x Removable 2.5" SATA HDD Bay  |
| Hardware RAID Levels                | RAID 0, 1, 5, 10   |
| Network (Model MB-502-X-XXX-A2-CT)  | GbE1: Intel® I210-AT (Support Wake-on-LAN and PXE) – RJ45<br>GbE2: Intel® I219-LM (Support Wake-on-LAN and PXE) – RJ45   |
| Network (Model MB-506-X-XXX-A2-CT)  | GbE1: Intel® I210-AT (Support Wake-on-LAN and PXE) – RJ45<br>GbE2: Intel® I219-LM (Support Wake-on-LAN and PXE) – RJ45<br>GbE3 to GbE6: Intel® I350-AM4<br>PoE for GbE3 to GbE6: 4x IEEE 802.3at (25.5W) – RJ45  |
| Network (Model MB-506-X-XXX-A12-CT) | GbE1: Intel® I210-AT (Support Wake-on-LAN and PXE) – RJ45<br>GbE2: Intel® I219-LM (Support Wake-on-LAN and PXE) – RJ45<br>GbE3 to GbE6: Intel® I350-AM4<br>PoE for GbE3 to GbE6: 4x IEEE 802.3at (25.5W) – M12   |
| Network (Model MB-510-X-XXX-A2-CT)  | GbE1: Intel® I210-AT (Support Wake-on-LAN and PXE) – RJ45<br>GbE2: Intel® I219-LM (Support Wake-on-LAN and PXE) – RJ45<br>GbE3 to GbE10: Intel® I350-AM4<br>PoE for GbE3 to GbE10: 16x IEEE 802.3at (25.5W) – RJ45   |
| Network (Model MB-510-X-XXX-A12-CT) | GbE1: Intel® I210-AT (Support Wake-on-LAN and PXE) – RJ45<br>GbE2: Intel® I219-LM (Support Wake-on-LAN and PXE) – RJ45<br>GbE3 to GbE10: Intel® I350-AM4<br>PoE for GbE3 to GbE10: 16x IEEE 802.3at (25.5W) – M12  |
| Network (Model MB-514-X-XXX-A2-CT)  | GbE1: Intel® I210-AT (Support Wake-on-LAN and PXE) – RJ45<br>GbE2: Intel® I219-LM (Support Wake-on-LAN and PXE) – RJ45<br>GbE3 to GbE14: Intel® I350-AM4<br>PoE for GbE3 to GbE14: 16x IEEE 802.3at (25.5W) – RJ45   |
| Network (Model MB-514-X-XXX-A12-CT) | GbE1: Intel® I210-AT (Support Wake-on-LAN and PXE) – RJ45<br>GbE2: Intel® I219-LM (Support Wake-on-LAN and PXE) – RJ45<br>GbE3 to GbE14: Intel® I350-AM4<br>PoE for GbE3 to GbE14: 16x IEEE 802.3at (25.5W) – M12  |
| Network (Model MB-518-X-XXX-A2-CT)  | GbE1: Intel® I210-AT (Support Wake-on-LAN and PXE) – RJ45<br>GbE2: Intel® I219-LM (Support Wake-on-LAN and PXE) – RJ45<br>GbE3 to GbE18: Intel® I350-AM4<br>PoE for GbE3 to GbE18: 16x IEEE 802.3at (25.5W) – RJ45   |
| Network (Model MB-518-X-XXX-A12-CT) | GbE1: Intel® I210-AT (Support Wake-on-LAN and PXE) – RJ45<br>GbE2: Intel® I219-LM (Support Wake-on-LAN and PXE) – RJ45<br>GbE3 to GbE18: Intel® I350-AM4<br>PoE for GbE3 to GbE18: 16x IEEE 802.3at (25.5W) – M12  |
| Multiple Display                    | 1x DVI-I, 2x Display Ports, VGA through optional split cable   |
| Audio Codec                         | Realtek ALC888S  |
| SIM Socket                          | 4x SIM Socket (MB-502)<br>3x SIM Socket (MB-506)   |
| Multi-Constellation GNSS            | GPS/GLONASS/BeiDou/Galileo/QZSS (Optional)   |
| LTE Category 4 Module Data Transfer | LTE FDD: Max 150Mbps (DL) / Max 50Mbps (UL), LTE TDD : Max 130Mbps (DL) / Max 30Mbps (UL),<br>DC-HSDPA : Max 42Mbps (DL), HSUPA : Max 5.76Mbps (UL), WCDMA : Max 384Kbps (DL) / Max<br>384Kbps (UL), EDGE : Max 296Kbps (DL) / Max 236.8Kbps (UL), GPRS: Max 107Kbps (DL) / Max<br>85.6Kbps (UL) |
| LTE Module Protocols                | TCP/UDP/PPP/FTP/FTPS/HTTP/HTTPS/NTP/PING/QMI/NITZ/MMS/SMTP/SSL/MQTT/FILE   |

\*Specifications are subject to change, without prior notice

4:00 MOBIX-II Series



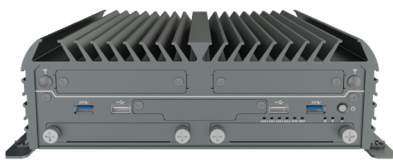


## Technical Specifications continued

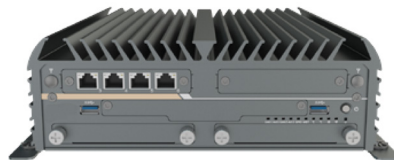
|   |  |
|---|--|
| <b>I/O Ports</b>                            | 2x RS-232/422/485, 2x RS-232/422/485 (internal), 6x USB 3.0, 2x USB 2.0, 2x GbE RJ45 (all models) 4x IEEE 802.3at (25.5W) – RJ45 (MB-506-X-XXXX-A2-CT) / M12 (MB-506-X-XXXX-A12-CT), 1x Mic-in, 1x Speaker-out, 8x IN/OUT Digital IO (isolated), 2x Universal I/O Bracket (For mini PCIe application), 6x Wi-Fi Antenna Holes, 1x Power Switch, 1x AT/ATX Switch, 1x Remote Power On/Off |
| <b>Operating System</b>                     | Windows 10   |
| <b>Power Connector</b>                      | 3-pin Terminal Block   |
| <b>Power Adaptor</b>                        | Optional AC/DC 24V/5A, 120W  |
| <b>Power Protection</b>                     | OVP (Over Voltage Protection), OCP (Over Current Protection), Reverse Protection   |
| <b>Voltage</b>                              | 9 to 48 VDC  |
| <b>Dimensions – mm (D x W x H)*</b>         | 261 x 240 x 79   |
| <b>Dimensions – mm (D x W x H)**</b>        | 261 x 240 x 107  |
| <b>Environment</b>                          | Operation temperature: -25°C ~ 70°C<br>Non-operation temperature: -30°C ~ 85°C   |
| <b>Relative Humidity (%)</b>                | Non-operation humidity: 10%~ 95% (Non-condensing)  |
| <b>Vibration</b>                            | With SSD: 5 Grms, 5-500Hz, 0.5 hr/axis<br>With HDD: 1 Grms, 5-500Hz, 0.5 hr/axis   |
| <b>Shock</b>                                | With SSD: 50G, half sine, 11ms   |
| <b>Standards/Certification</b>              | CE, FCC Class A, E-Mark, EMC Conformity with EN50155 & EN50121-3-2   |
| <b>Warranty Period</b>                      | 3 Years  |
| <b>BTU/hr (with optional Power Adaptor)</b> | 410.31   |

\*Up to 8 ports in POE & M12

\*\* Up to 16 ports in POE & M12



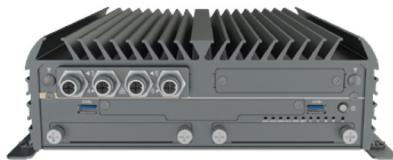
1. \*  
MOBIX II - 2x RJ45 - i5 - 5TB  
MB-502-5-5000-A2-CT



2. \*  
MOBIX II - 2x RJ45 - 4x Ports POE - i5 - 7.6TB  
MB-506-5-7600-A2-CT



3. \*  
MOBIX II - 2x RJ45 - 8x Ports POE - i5 - 7.6TB  
MB-510-5-7600-A2-CT



4. \*  
MOBIX II - 2x RJ45 - 4x Ports M12 - i5 - 7.6TB  
MB-506-5-7600-A12-CT



5. \*  
MOBIX II - 2x RJ45 - 8x Ports M12 - i5 - 7.6TB  
MB-510-5-7600-A12-CT



6. \*\*  
MOBIX II - 2x RJ45 - 16x Ports POE - i5 - 7.6TB  
MB-518-5-7600-A2-CT



7. \*\*  
MOBIX II - 2x RJ45 - 16x Ports POE - i5 - 7.6TB  
MB-518-5-7600-A12-CT