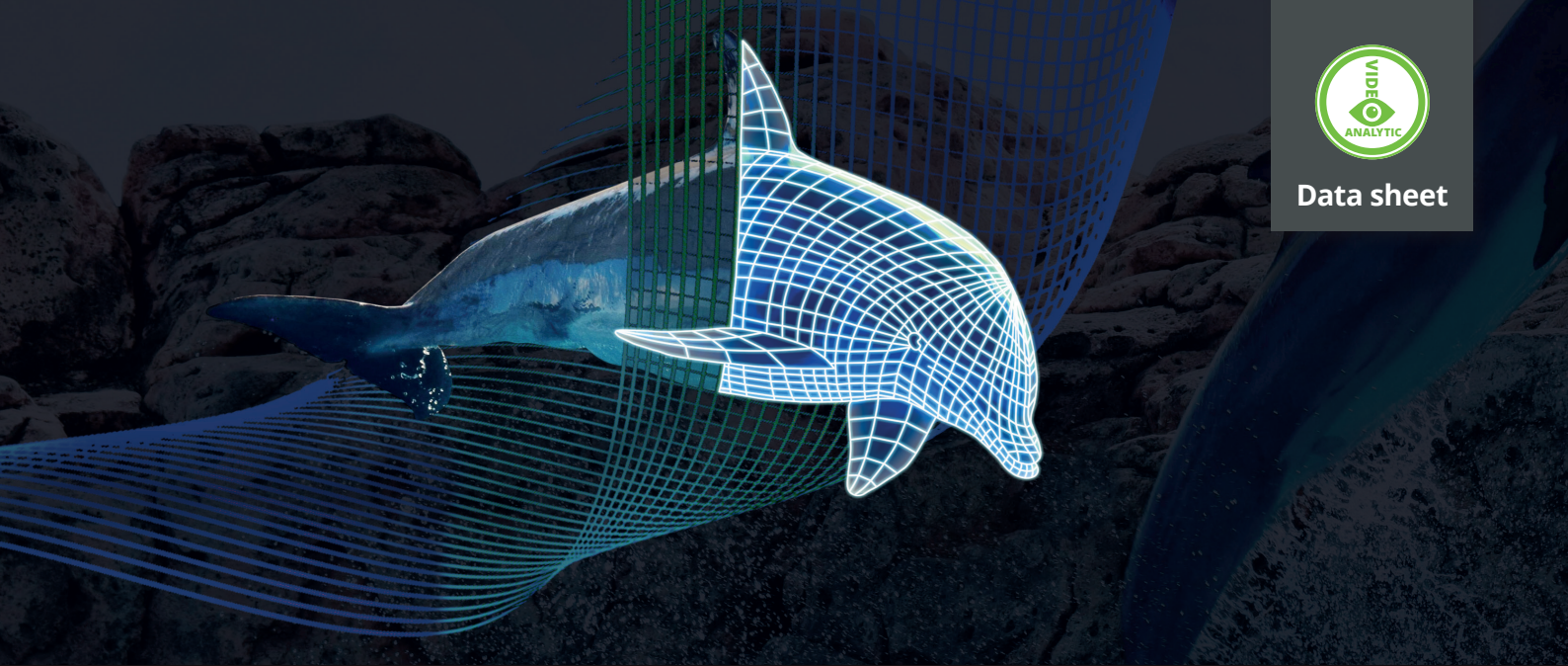




Data sheet



# Video Analytics Servers – 2 to 8 GPU Cards



DPX-852 VIDEO ANALYTICS SERVER

The DP-x52 Series has transformed the market for Video Analytic Servers. Supporting up to eight High Performance NVIDIA GPU cards per server, the DP-x52 Series is the ideal platform for Facial Recognition, Situational Awareness or Machine Learning based analytics.

## GPU-Power taking Video Analytics to the next level

With the increased use of CCTV cameras and density of sensors, Video analytics is a must to enable enhanced security and surveillance solutions by automatically monitoring video content.

Face recognition and Wide-Area Situational Awareness (WASA) require LIVE and immediate Alerts to be efficient. However, previous generations of Video Analytics Servers are struggling to handle the amount of data, which is the main reason for the high cost of large-scale Video Analytic applications.

The Fibrenetix DP-Series supports up to eight compatible NVIDIA GPU cards with thousands of CUDA Cores in each GPU card and help reducing the amount of video data that security operators must review and enable a high level of monitoring for any size video surveillance system.

Numbers of required Servers are reduced drastically and therefore cost of implementation is equally reduced.

When Server density is reduced the operator can expect considerable savings on electrical power consumption and need for A/C Server room cooling, offering the lowest cost of ownership in the industry today.

## Examples for use:

- Facial Recognition
- Automatic Number-Plate Plate Recognition (ANPR)
- Airport Security
- Traffic Congestion
- Situational Awareness
- Investigation and Forensics
- Wrong way Detection
- Instant Video Search



4:0 DP-Series: Video Analytics Servers

Europe – Americas – Middle East sales@fibrenetix.com www.fibrenetix.com



Video Analytics Servers 15.02.2022

## Advantages

- The Video Analytics Server is based on the Intel® Xeon® 64bits platform, with support for the latest Xeon® Gold Series multi-core processors – offering up to 48 cores in dual processor configuration (QPI up to 8GT/sec)
- High Density GPU Server, Up to 8 Graphics Processing Unit (GPU) Cards
- Supports NVIDIA® Quadro® P1000/P2000/P4000, Tesla® P4, Turing® T4, GeForce RTX 2080Ti
- Up to 3072GB of RAM
- Smart thermal design for energy efficiency
- Simplified maintenance and management
- Scalable design for expanding infrastructure

# Video Analytics Servers



Data sheet

## Technical Specifications

| Product Category                                | Video Analytics DP-652-2U   | Video Analytics DP-852-2U                                   | Video Analytics DPX-852-4U  |
|---|---|---|---|
| Processor                                       | 2x Intel® Xeon® Gold Processors   |   |   |
| Core Logic                                      | Intel® Lewisburg PCH C621   |   |   |
| Memory  | 16GB RDIMM, up to 2048GB LRDIMM   |   | 16GB RDIMM, up to 3072GB LRDIMM   |
| OS Storage                                      | 2x 240GB SSD  |   |   |
| HDD Bays  | 8x Hot-swap 2.5" HDD Bays<br>(including 2x Bays for the OS)   | 8x Hot-swap 3.5" HDD Bays<br>(including 2x Bays for the OS) | 8x Hot-swap 2.5" HDD Bays<br>(including 2x Bays for the OS)                               |
| Maximum HDD Capacity Supported                  | 7.6TB per Hard Drive  | 20TB per Hard Drive   | 7.6TB per Hard Drive  |
| Maximum Storage Capacity                        | 60.8TB  | 160TB   | 60.8TB  |
| Network   | 2x 1Gbps Port Intel I350-AM2<br>2x 10Gbps Adapter (optional)  |   |   |
| Graphics (Standard)                             | Aspeed AST2500 with 64MB VRAM   |   |   |
| Expansion Slots for GPUs                        | Up to 4x Double-Deck GPU Cards<br>Total: 8 + 3 Full-length/Full-height<br>8x PCI-E 3.0x16 (4 at x16 Link or 8 at x8 Link) |   | Up to 8x Double-Deck GPU Cards<br>Total: 8 + 3 Full-length/Full-height<br>8x PCI-E 3.0x16 |
| GPU Cards Supported                             | NVIDIA® GeForce® GTX 1080Ti/2080Ti<br>NVIDIA® Tesla® P4/T4<br>NVIDIA® Tesla® P40  |   |   |
| Rear I/O Ports                                  | 2x USB 3.0 port<br>1x VGA port<br>1x RJ45 Management LAN port<br>2x RJ45 LAN ports  |   |   |
| Rear Switch/LED                                 | 1x Power switch/LED<br>1x Location switch/LED<br>2x LAN LEDs<br>1x Message LED<br>1x HDD LED                              |   |   |
| Operating System                                | Windows® Storage Server 2016  |   |   |
| Management Solution                             | On-Board ASMB9-iKVM for KVP-over-IP   |   |   |
| Power Supply                                    | 1+1 Redundant 1600W 80 Plus Platinum Power Supply   |   |   |
| Voltage   | 100-127 Vac, 12.9A, 1000W<br>200-240Vac, 9.5A, 1600W  |   |   |
| Dimensions - mm (D x W x H)                     | 800 x 440 x 88 (2U)   | 800 x 440 x 88 (2U)   | 798 x 439 x 175.6 (4U)  |
| Net Weight (CPU, DRAM, HDDs, GPUs not included) | 20.9kgs   | 22.6kgs   | 23.5kgs   |
| Environment                                     | Operation temperature: 10°C ~ 35°C<br>Non-operation temperature: -40°C ~ 70°C   |   |   |
| Relative Humidity (%)                           | Non-operation humidity: 20% ~ 90% (Non-condensing)  |   |   |
| Accessories                                     | 2x Power Cords, Warranty Card, Quick-User Guide   |   |   |
| Certification                                   | BSMI, CE, RCM, FCC(Class A)   |   |   |
| Warranty Period                                 | 3 Years   |   |   |
| BTU/hr  | 5,470.72 (at 200-240Vac)  |   |   |

\*Specifications are subject to change, without prior notice.