



# INVESTIGATOR DATASHEET

**BriefCam**

The BriefCam® Investigator Appliance delivers a unique fusion of computer vision and Deep Learning technologies, together with its patented VIDEO SYNOPSIS® solution, enabling video investigators to rapidly pinpoint people and objects of interest, review hours of video in just minutes, and effectively collaborate on cases for swift resolution.

The Investigator Appliance is a plug-and-play, all-in-one video analytics solution, for file-based video ingestion that seamlessly transforms video into actionable intelligence. The Investigator Appliance accelerates investigations, increases the productivity of video investigators, and enables rapid time-to-target.



# ACCELERATE INVESTIGATIONS



## REVIEW

**CASE MANAGEMENT:** Organize all video assets of an investigation in a single container, bookmark objects of interest, and summarize case findings (including all relevant exhibits) in an exportable report, while dynamically collaborating on cases with other users.

**VIDEO SYNOPSIS®:** BriefCam's VIDEO SYNOPSIS solution simultaneously presents objects that have appeared at different times within the video. The result is a dramatically shorter video segment that fully preserves the viewer's ability to analyze the scene, enabling the review of hours of video in minutes and sometimes seconds.

**MULTI-CAMERA SEARCH:** Powerful and advanced multi-camera search capabilities for all BriefCam search filters and Visual Layers.

**FACE RECOGNITION:** Accurate face recognition for rapidly pinpointing persons included or excluded in watchlists, based on images extracted from existing video or data uploads.

**LICENSE PLATE RECOGNITION:** Differentiated license plate recognition, designed especially for "in the wild" surveillance scenarios and ease of operation in finding license plates through watchlists, existing video or data uploads.

**LINE CROSSING:** Detect, filter and count objects that cross a demarcation in a pre-defined direction to drive perimeter protection and directional object count.

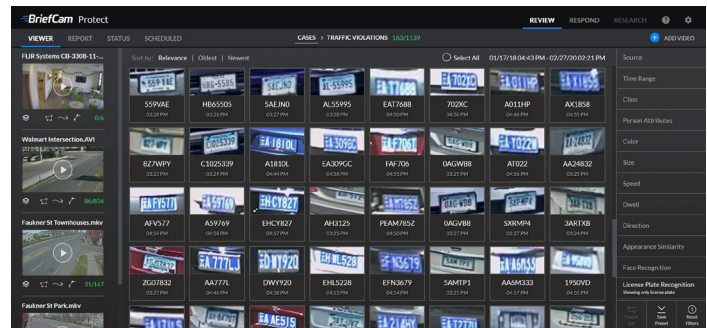
**APPEARANCE SIMILARITY:** Instantly locate people, vehicles, and other items of interest by searching for objects with similar attributes.

**VISUAL LAYERS:** Create visual analytics for activity, dwell time, common paths and background changes.

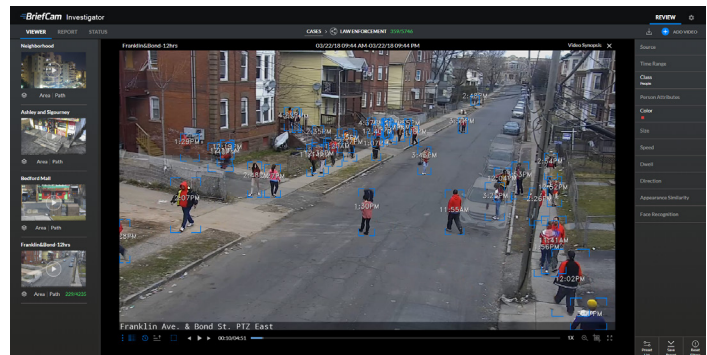
**FILTER TOLERANCE:** Adjust tolerance levels to refine search results.

**DENSITY & SPEED CONTROL:** Increase or decrease the number and speed of events shown at once.

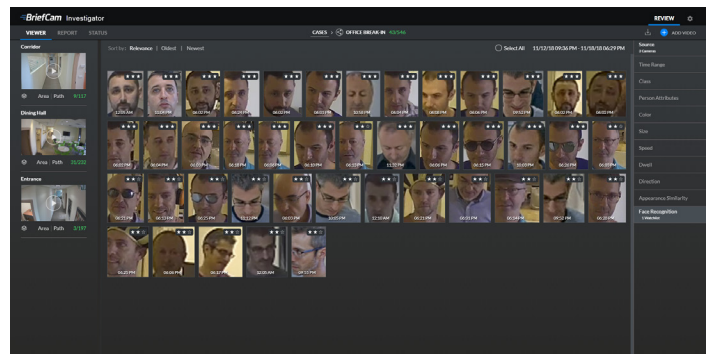
**SORT CONTROL:** View events by relevance or by order of occurrence and easily zoom in on items of interest.



REVIEW: License Plate Recognition with Search



REVIEW: BriefCam's VIDEO SYNOPSIS with Search



REVIEW: Face Recognition with Watchlist

## PRODUCT EDITIONS

### INVESTIGATOR

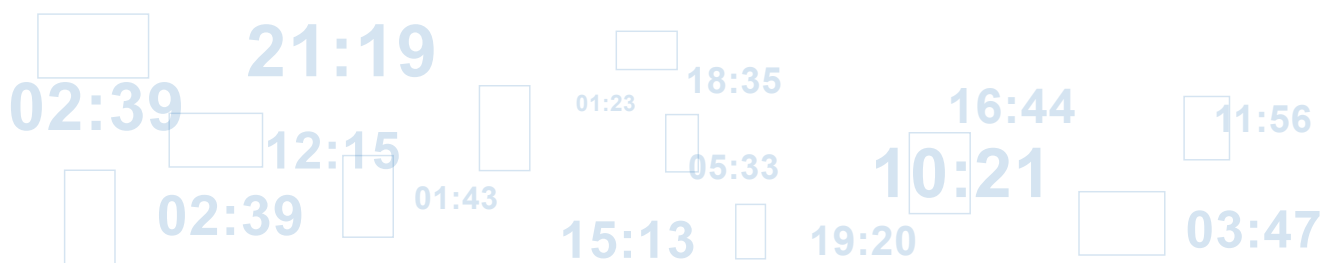
File-based

REVIEW only \*

Single-user | Multi-user

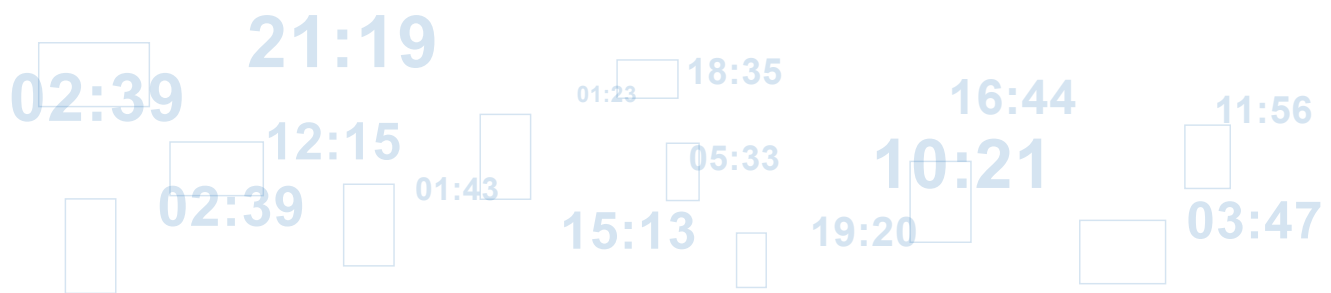
\* BriefCam's RESPOND and RESEARCH modules are available in other product editions.

SEARCH FILTERS	
SOURCE	Limit objects to specific cameras or files
TIME RANGE	Limit the search criteria to specific time ranges
CLASS	<b>Class Categories:</b> People, Two-Wheeled Vehicles, Other Vehicles, and Animals <b>People:</b> Man, Woman, Boy, and Girl <b>Two-Wheeled Vehicle:</b> Bicycle and Motorcycle <b>Other Vehicles:</b> Car, Pickup, Van, Truck, Bus, Train, Airplane, and Boat <b>Illumination Changes:</b> Lights On, Lights Off <b>Animals</b>
ATTRIBUTES	<b>Lower Wear:</b> Long, Short, and by Color <b>Upper Wear:</b> Long Sleeves, Short Sleeves, and by Color <b>Hats:</b> No Hat, Hat <b>Bags:</b> No Bag, Backpacks, Handheld Bags
COLOR	Identify objects according to any combination of Brown, Red, Orange, Yellow, Green, Lime, Cyan, Purple, Pink, White, Grey, and Black
APPEARANCE SIMILARITY	Identify people and vehicles with similar attributes
FACE RECOGNITION	<b>View All Faces:</b> View all faces that were detected in a case <b>Search by Face:</b> View all faces that were detected in a case and search by face using external images, or images from video
LINE CROSSING	Filter objects that cross a demarcation in a predefined direction
DIRECTION	Select objects according to their direction as visually seen in the video
SIZE	Select objects based on their actual (real-life) size from a histogram of sizes relevant to a specific case
PATH	Identify objects traveling along one or more user-defined paths
AREA	Identify objects included or excluded within one or more user-defined 3- or 4-sided polygon areas
SPEED	Select objects based on their actual speed from a histogram of speeds relevant to a specific case
DWELL	Select objects dwelling for longer than a certain period in a scene



## TECHNICAL SPECIFICATIONS

<b>SUPPORTED RESOLUTION</b>	Minimum CIF, Maximum 4K
<b>SUPPORTED FRAME RATE (FPS)</b>	8-30 frames per second
<b>SUPPORTED VIDEO FILE FORMATS</b>	.AVI, .MKV, .MPEG4, .MOV, .WMV, .DVR, .ASF, .RT4, .DIVX, .264, .H264, .H265, .GE5, .TS, .3GP, .XBA (single stream and multi-stream), .MP4, .FLV
<b>SUPPORTED CODECS</b>	H.264, H.265/HEVC, MPEG-4, H.263 (H.265 is supported for selected VMSs and cameras)
<b>FILE-BASED INGESTION</b>	Multi-file videos or single file videos
<b>SUPPORTED CAMERA TYPES</b>	Fixed Cameras
<b>FACE RECOGNITION</b>	Minimum Face Size: 24x24 pixels
<b>SUPPORTED LANGUAGES</b>	Brazilian Portuguese, Chinese Simplified, Chinese Traditional, Danish, Dutch, English, Finnish, French, German, Japanese, Korean, Latin Spanish, Turkish, Vietnamese
<b>SUPPORTED BROWSERS</b>	Google Chrome Desktop and Firefox



## ABOUT BRIEFCAM

BriefCam is the industry's leading provider of Deep Learning and VIDEO SYNOPSIS® solutions for rapid video review and search, face and license plate recognition, real-time alerting and quantitative video insights. By transforming raw video into actionable intelligence, BriefCam dramatically shortens the time-to-target for security threats, while increasing safety and optimizing operations. BriefCam's award-winning products are deployed by law enforcement and public safety organizations, government and transportation agencies, major enterprises, healthcare and educational institutions, and local communities worldwide. For more information about transforming video surveillance into actionable intelligence, visit [www.briefcam.com](http://www.briefcam.com).