

AC2000
ENTERPRISE

AC2000 ENTERPRISE;
THE CONNECTED WAY TO
MANAGE MULTIPLE SITES
ANYWHERE IN THE WORLD



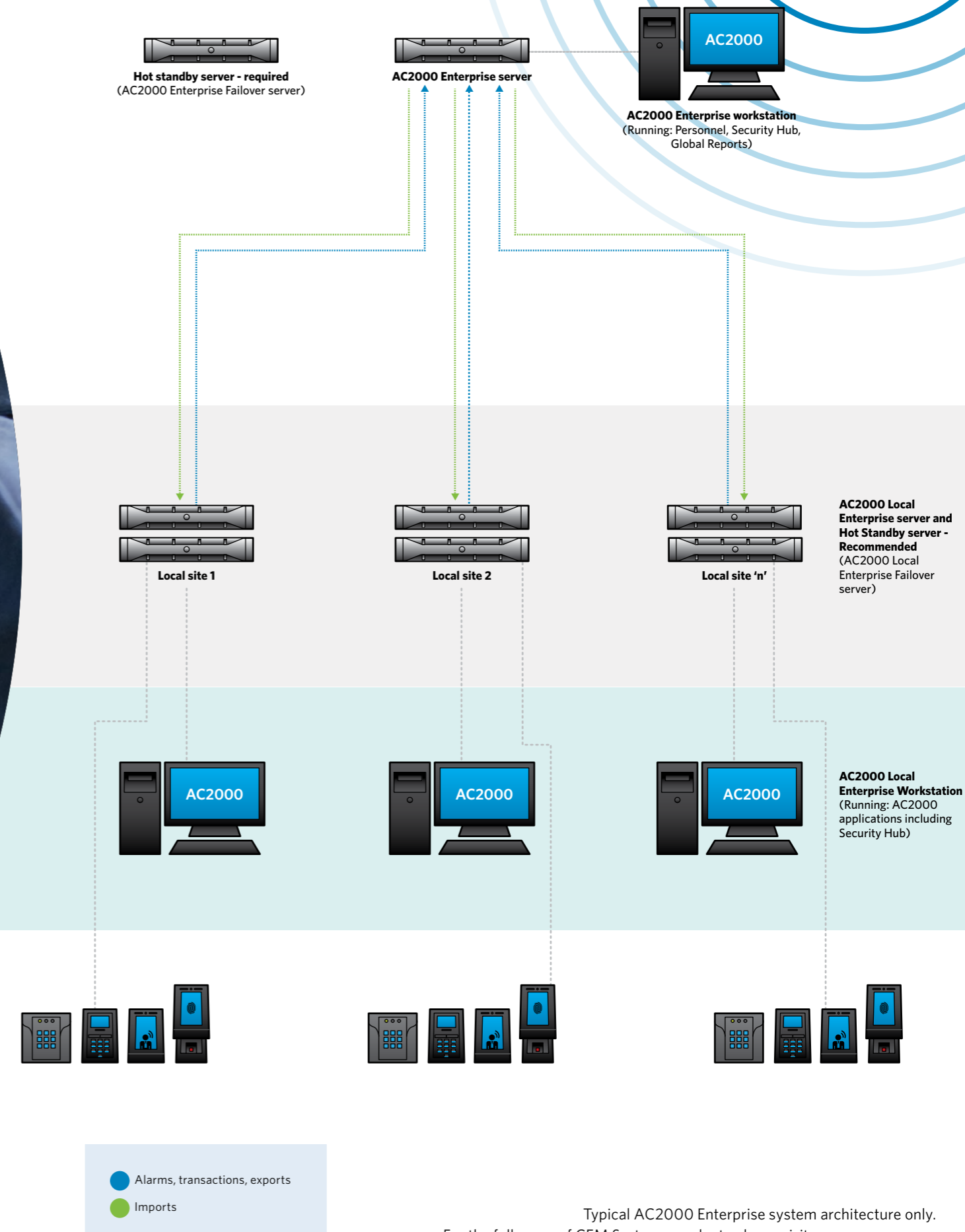


THE WORLD IS SMALLER WITH **AC2000 ENTERPRISE**;
THE AC2000 ENTERPRISE SYSTEM PROVIDES SUPERIOR
CENTRALISED ACCESS CONTROL AND MONITORING CAPABILITY
WHERE WIDE GEOGRAPHICAL DISTRIBUTION OCCURS, OR WHERE
DEPARTMENTAL OR BUSINESS UNIT SEPARATION IS NECESSARY.

AC2000 Enterprise helps multi-site deployments:

- Grow your system as your organisation grows
- Improve global reporting, alarm processing and personnel management from one central location
- Reduce downtime and risk during upgrades as servers can be upgraded independently
- Improve decision making with a holistic view of data across all connected sites

TYPICAL ENTERPRISE SYSTEM ARCHITECTURE



AC2000 ENTERPRISE STRUCTURE

DESIGNED AROUND A SINGLE AC2000 ENTERPRISE SERVER CENTRALLY CONNECTED TO AN UNRESTRICTED NUMBER OF AC2000 LOCAL ENTERPRISE SERVERS*.

A central AC2000 Enterprise server holds all personnel, card information, card swipes and alarm information from all linked AC2000 Local Enterprise sites.

At the local level, whether in the same geographical area or a remote location across the globe, the AC2000 Local Enterprise servers can perform the roles of localised alarm management, reporting and monitoring. Each AC2000 Local Enterprise server synchronises data to the central AC2000 Enterprise server, but it is also able to work independently when network connectivity is not available.

*Dependent on server hardware specification.



PERSONNEL/CARD EXPORTS

Records can be exported from each AC2000 Local Enterprise site to some or all of the other connected enterprise sites. At the central AC2000 Enterprise server it is possible to specify which sites it can export to and whether the exports are:

Auto - all records are immediately exported to this site

Manual - the operator selects which records are exported

Forbidden - meaning no exports are allowed



GLOBAL HUB - CENTRALISED ALARMS

AC2000 Security Hub command and control application can be run on the AC2000 Enterprise server, providing access to all AC2000 Local Enterprise site maps, devices and alarms. Alarms can be acknowledged and canceled at both the central and local sites and 'oneshots' can also be issued centrally from the AC2000 Enterprise server in the absence of the local operator. The consolidation of data across multiple sites also provides a holistic view of the deployment for enhanced decision making.



GLOBAL TIME ZONE SUPPORT

The central AC2000 Enterprise server and each AC2000 Local Enterprise are not tied to a single time zone. Each server can be located and operate in different time zones with each server set to its local time and still able to connect to the central AC2000 Enterprise server. This allows operators to manage their site alarms in local time and provides more efficient alarm prioritisation.



ENTERPRISE ACCESS LEVELS

A powerful feature which enables centralised access level assignments and reduces operator intervention. On the central AC2000 Enterprise server up to 1,000 enterprise access levels can be created and assigned to any card holders on the enterprise system as extra access. Each AC2000 Local Enterprise site specifies which of their devices (if any) are included in each Enterprise access level. Card holders assigned to an Enterprise access level can then access all devices in that access level across the enterprise deployment without the need to request access at each individual site.



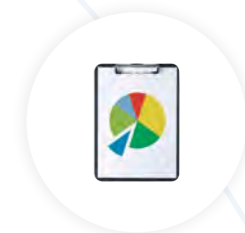
MULTI-VERSION SUPPORT

AC2000 Enterprise can link AC2000 Local Enterprise sites running different versions of AC2000. The enterprise link will continue to function when upgrading one site to the latest release of AC2000 while other sites continue to run earlier version (supported from AC2000 v10.0 and higher). This simplifies the process of adding sites and significantly reduces downtime of the system during upgrades, by removing the need for all servers to be running the same version of AC2000.



AC2000 FUNCTIONALITY AT LOCAL SITES

Each AC2000 Local Enterprise communicates directly with the AC2000 Enterprise but is not reliant on this for controlling local field devices and for viewing local system alarms. This gives regional system administrators control over alarm management at their individual regions independent of the AC2000 Enterprise and over the reliance on availability of a wide area network (WAN).



GLOBAL REPORTING

With AC2000 Enterprise it is possible to report on all activities (e.g. transactions) of a company or card holder across all sites, providing a holistic view of the system deployment for enhanced decision making.

Global Reports available on the AC2000 Enterprise server include:

- Absentee
- Alarm
- Card Parking
- Device (Alarm & Transaction)
- First and Last
- Reader Activity
- Transaction
- Broadcast (Only shows the broadcasts issued from the central Enterprise Server)

AC2000
ENTERPRISE

GLOBAL 'ONESHOTS' AND BROADCASTS

This allows centralized operators the ability to provide support to local sites in the absence of the local operator or provide out of hours coverage. The broadcast zones created at the AC2000 Local Enterprise sites are also replicated to the central AC2000 Enterprise server, allowing its users to open/close broadcast zones at the remote sites.



AC2000 SOFTWARE OPTIONS

AC2000

- Powerful and fully integrated access control & security management system
- Supports a scalable number of doors
- Supports a scalable number of cardholders
- Highly customizable
- High level integrations with leading video, intruder, fire & perimeter detection partners
- Ideal for medium to large scale complex projects

AC2000 Lite

- Cost effective access control for smaller sites
- Supports up to 128 doors
- Supports up to 5 workstations
- Supports up to 10,000 cardholders
- Encompasses core AC2000 software modules
- Integration with selected video and intruder systems
- Ideal for small to medium sized projects

AC2000 Airport

- Integrated airport-specific access control & security management system
- Proven in leading airports around the world; including 80% of UK Airports
- Highly customizable
- Aviation features include check-in-desk enabling, passenger segregation, air-bridge monitoring

And much more.